

 **katena**



- **Asymmetric punch shape**

- Pedicle/Tail: Designed to allow grasping the tissue for manipulation without damaging the endothelial cells near the central area of the graft
- Notch/bump: Assists in orientation of the graft in the eye

- **Blade design**

- Novel sculpted blade design allows blade to fit curvature of the punch and allows the pedicle/tail to be cut last
- Created from a solid rod of stainless steel
  - Seamless blade for a uniform, clean cut
- Micro-honed for a superior cutting edge
  - Thinner blade wall
  - Steeper blade angle
  - Advanced blade finishing

- **Tissue visualization**

- Features an “open top” design
  - Improves tissue visualization prior to cutting

- **Punch diameter: 7.6mm**

- **Vacuum seating**

- Immobilizes tissue during cut

- **Punch supplied as**

- Sterile; single use disposable
- Fully assembled and ready for use

- **Optimal intended use**

- Surgeon self-preparation of donor corneal tissue
- Eye Bank preparation of donor corneal tissue

- **Patent pending**

- USA
- Outside USA

- **Item #: K20-2206**



The Barron Donor Cornea Punch® is recognized globally as the industry standard in cornea transplant surgery. The punch has undergone a redesign, maintaining the features that traditionally set it apart, while adding new features to improve performance and make tissue visualization easier.

The vacuum donor punch has become the standard in cornea transplant surgery.

The original non-vacuum donor punch is still available for surgeons who do not use vacuum for tissue fixation. It encompasses all the features of the vacuum punch, except for vacuum fixation.

- **Blade design**

- Created from a solid rod of stainless steel
  - Seamless blade for a uniform, clean cut
- Micro-honed for a superior cutting edge and a sharper cut
- Thinner blade wall
- Advanced blade finishing

- **Tissue visualization**

- Features an “open top” design
  - Improves tissue visualization prior to cutting

- **Size confirmation**

- Marked with the diameter of the blade on the top and sides of the punch

- **Available punch diameters**

- 6.00 – 9.5mm diameters

- **Vacuum seating** (*Vacuum Donor Punches only*)

- Immobilizes tissue for a more perpendicular cut

- **Punch supplied as/with**

- Sterile; single use disposable
- Packaged fully assembled and ready for use
- Gentian violet marking pen at no additional cost

- **Optimal intended use**

- Surgeon self-preparation of donor corneal tissue
- Eye Bank preparation of donor corneal tissue



<a href="#">K20-2100</a>	6.00mm	<a href="#">K20-2108</a>	8.00mm
<a href="#">K20-2102</a>	6.50mm	<a href="#">K20-2109</a>	8.25mm
<a href="#">K20-2103</a>	6.75mm	<a href="#">K20-2110</a>	8.50mm
<a href="#">K20-2104</a>	7.00mm	<a href="#">K20-2111</a>	8.75mm
<a href="#">K20-2105</a>	7.25mm	<a href="#">K20-2112</a>	9.00mm
<a href="#">K20-2106</a>	7.50mm	<a href="#">K20-2113</a>	9.25mm
<a href="#">K20-2107</a>	7.75mm	<a href="#">K20-2114</a>	9.50mm

<a href="#">K20-2070</a>	6.00mm	<a href="#">K20-2078</a>	8.00mm
<a href="#">K20-2072</a>	6.50mm	<a href="#">K20-2079</a>	8.25mm
<a href="#">K20-2073</a>	6.75mm	<a href="#">K20-2080</a>	8.50mm
<a href="#">K20-2074</a>	7.00mm	<a href="#">K20-2081</a>	8.75mm
<a href="#">K20-2075</a>	7.25mm	<a href="#">K20-2082</a>	9.00mm
<a href="#">K20-2076</a>	7.50mm	<a href="#">K20-2083</a>	9.25mm
<a href="#">K20-2077</a>	7.75mm	<a href="#">K20-2084</a>	9.50mm

The Barron Radial Vacuum Trepine® is used for cutting the transplant recipient's cornea tissue. Recognized as the global standard in recipient trephines, the Barron Radial Vacuum Trepine® may be paired with the Barron Vacuum Donor Punch® for consistency of sizing and quality of cut.

- **Blade design**

- Created from a solid rod of stainless steel
  - Seamless blade for a uniform, clean cut
  - Micro-honed for a superior cutting edge and a sharper cut

- **Vacuum chamber**

- 360° suction chamber
  - 16 radial, symmetric divisions
  - Reduces cornea aspiration and graft distortion

- **Marking and visual alignment**

- 16 radial divisions symmetrically mark the recipient bed for accurate alignment of sutures
  - Helps avoid surgically induced astigmatism
  - Divisions may be inked with a sterile marking pen to be clearly visible
- Fine cross hairs are provided
  - To assist in aligning with a pre-inked central corneal landmark

- **Calibrated cut**

- Rotating mechanism advances the blade depth 0.25mm with each 360° rotation

- **Available trephine diameters**

- 6.00 – 9.00mm diameters

- **Vacuum seating**

- Securely holds the trephine in place for an optimal perpendicular cut

- **Trepine supplied as/with**

- Sterile; single use disposable
- Packaged fully assembled and ready for use
- Gentian violet marking pen at no additional cost

- **Optimal intended use**

- Anterior lamellar or penetrating keratoplasty



<a href="#">K20-2050</a>	6.00mm	<a href="#">K20-2058</a>	8.00mm
<a href="#">K20-2052</a>	6.50mm	<a href="#">K20-2059</a>	8.25mm
<a href="#">K20-2054</a>	7.00mm	<a href="#">K20-2060</a>	8.50mm
<a href="#">K20-2055</a>	7.25mm	<a href="#">K20-2061</a>	8.75mm
<a href="#">K20-2056</a>	7.50mm	<a href="#">K20-2062</a>	9.00mm
<a href="#">K20-2057</a>	7.75mm		

---

---

## The first sterile disposable artificial anterior chamber

Ideally suited for surgeons who prefer to cut their own tissue, the Artificial Anterior Chamber can be used with the Radial Vacuum trephine to create a more precise cut of the donor tissue by cutting the cornea from the epithelial side. This more closely approximates the angle of cut obtained with the Barron Trephine in the recipient cornea, minimizing surgically induced astigmatism; creating the best donor tissue to recipient bed match.

- Designed to securely hold a 14-18mm cornea graft, including scleral rim
- Two ports with pinch clamps for infusing viscoelastic, BSS, or air
- Bright blue color provides a contrasting background for visualizing the cornea
- Ideal option for
  - Lamellar or penetrating keratoplasty or laser dissection
  - Not compatible with a mechanical microkeratome
- Item #: [K20-2125](#)

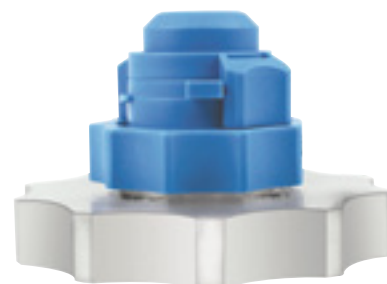
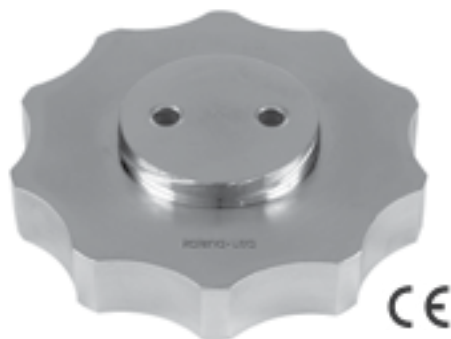


CE  
0413



A heavy stainless steel base to stabilize the artificial anterior chamber during use is available. The base is reusable and autoclavable.

- Item #: [K20-2126](#)







*Distributed by Katena Products, Inc.*  
6 Campus Drive • Suite 310 • Parsippany, NJ 07054  
[www.katena.com](http://www.katena.com) • [info@katena.com](mailto:info@katena.com) • 800.225.1195

KI-CAT-05282020-Rev1