

RETeval[®] for Pediatrics



PORTABLE VISUAL ELECTRODIAGNOSTIC SYSTEM

Get valuable information for a faster, more effective diagnosis and monitoring of vision-threatening diseases

Avoid Unnecessary Sedation with Powerful ERG Testing

An electroretinogram (ERG) test provides objective and functional information for medical professionals to understand and assess functional changes that may impact the patient's vision by looking at the retina's response to light.

COMMON USES FOR FULL FLASH AND FLICKER ERG TESTS

- Nystagmus¹
- Leber's Congenital Amaurosis
- Congenital Stationary Night Blindness
- Achromatopsia
- Retinopathy of Prematurity
- Malingering
- Unexplained Vision Loss
- Trouble Seeing in the Dark
- Changes in Color Vision

MINIMIZE NEED FOR SEDATION

Fewer tears, less rescheduling, low noise interference – **complete testing all in one fast visit**



PORTABLE EMR CAPABLE STANDARD OR CUSTOM PROTOCOLS

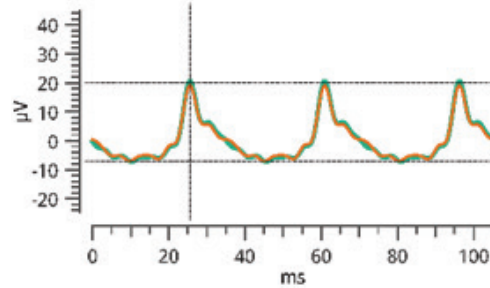
EFFECTIVE FUNCTIONAL RETINA TESTING FOR CHILDREN

PROVEN MEASUREMENTS BROAD SPECTRUM RESULTS

Featuring full ISCEV-compliant full field flash ERG/VEP testing, and the option to develop custom protocols for the most advanced all-in-one functional testing device.

- Repeatability
- Consistent Efficacy
- Real Time Pupilometer

EXAMPLE STANDARD FLICKER TEST



PHOTOPIC 30 Hz FLICKER



ELECTRODES AND ERG TESTING TO MATCH PATIENT NEEDS



- Use any approved corneal electrode
- Use patented **RETeval** Sensor Strip skin electrodes – great for children
- Dilated or Undilated Testing

“The **RETeval** device brings my practice a truly portable, easy to use ERG solution. We have the option of obtaining a standard ERG with skin electrodes or corneal electrodes. We were impressed with the ease of acquisition, the quality of the automatic reporting function and the affordability. The ability to download reports into our EMR facilitates timely record keeping and communication with referring doctors. We appreciate the overall quality of the device.”

— Dr. Monique Leys, MD EBO
West Virginia University Eye Institute

1 Grace et al. Portable non-sedated electroretinogram evaluation of children with nystagmus in the pediatric ophthalmology clinic. *Journal of AAPOS*, 2016.

LKC Technologies, Inc., established in 1975, is an ISO 13485:2003 & 2016 and MDSAP certified, FDA-registered medical device manufacturer with quality products installed worldwide in over 70 countries. RETeval is trademarked by LKC Technologies and the device is CE marked and FDA cleared. The project described was supported by Award Number R44EY021121 from the National Eye Institute. The content is solely the responsibility of LKC and does not necessarily reflect the views of the National Eye Institute of the National Institutes of Health. The RETeval device may be covered by one or more of the following US patents and their foreign counterparts: 7,540,613; and 9,492,098. Additional patents pending. The RETeval device Sensor Strips may be covered by one or more of the following US patents and their foreign counterparts: 9,510,762 and 10,010,261. Additional patents pending. RETeval DR is not currently available in the United States.

©2019 LKC Technologies, Inc. 98-001 8/19