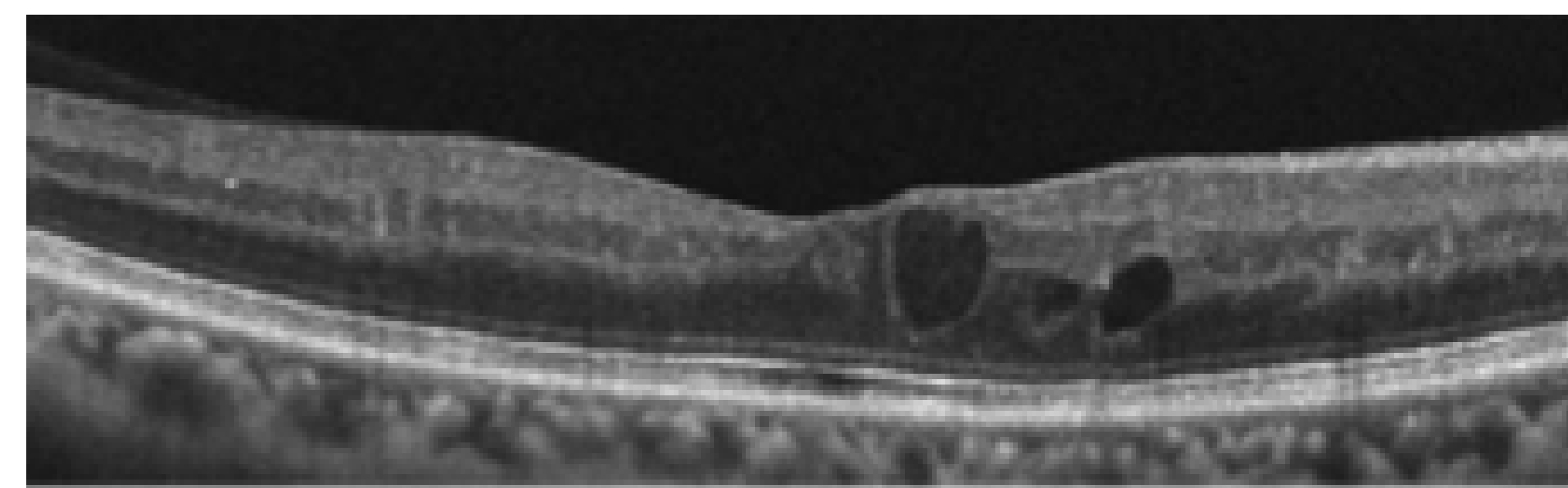
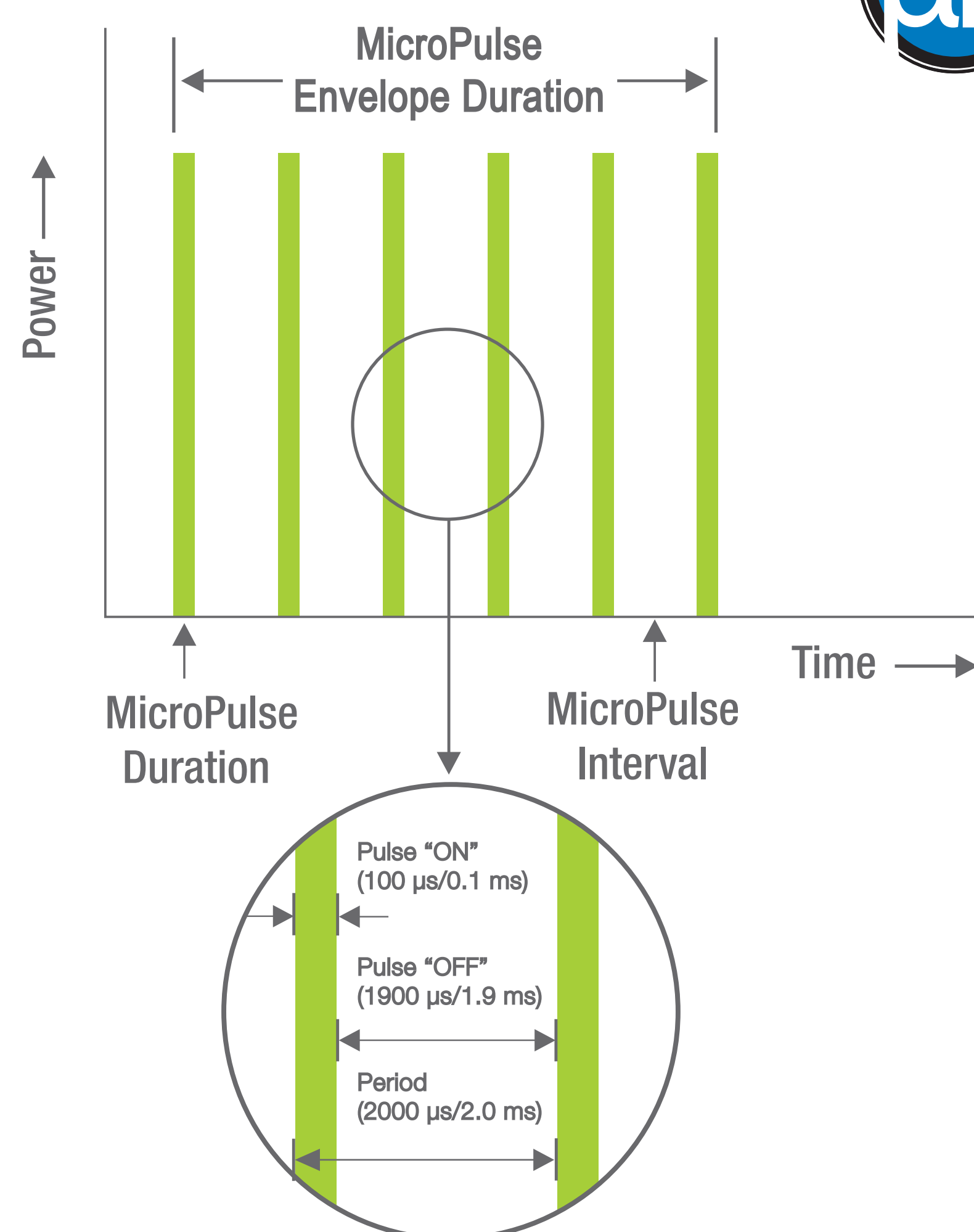


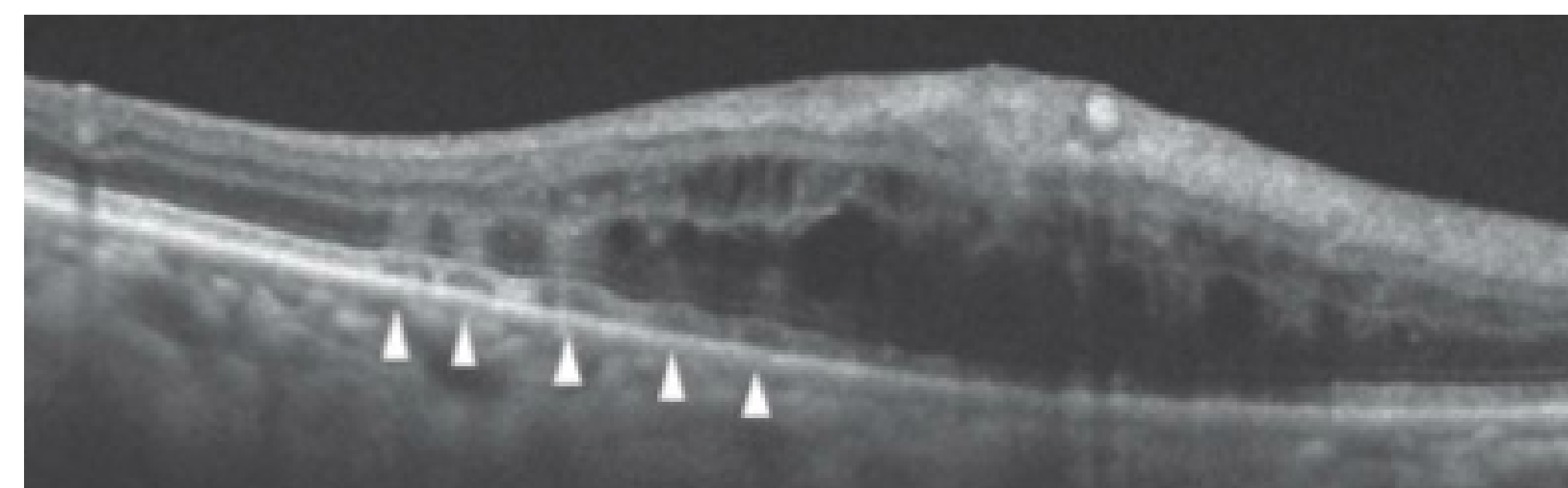
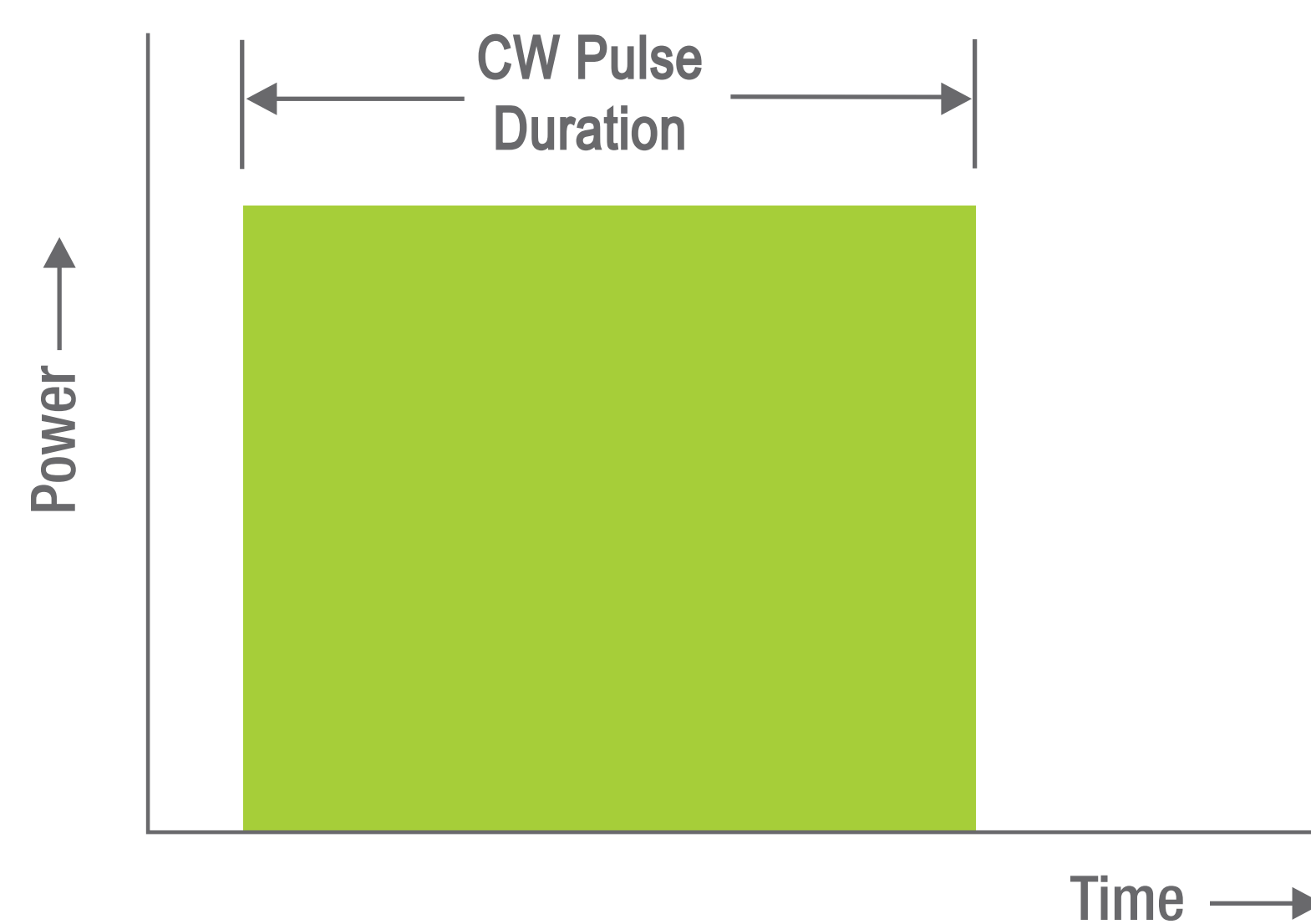
Tissue-Sparing MicroPulse™ Laser Therapy (MPLT)

MicroPulse technology finely controls thermal elevation by “chopping” a continuous-wave (CW) beam into a train of repetitive short pulses allowing tissue to cool between pulses and reduce thermal buildup.



100% of tissue spared. Retinal morphology did not change at any time during the observation period after MicroPulse.

CW Subthreshold Scanning



Fluid-like spikes adjacent to ruptured RPE (arrows) Immediately after CW and pattern scanning laser, a hyper-reflective band appeared at the laser sites.